

☐Urgent ☐Return receipt ☐Expand Group ☐Restricted ☐Prevent Copy ☐Confidential

Derek Ho Ming TAM/PLAND

寄件者: [REDACTED]
寄件日期: 2025年06月10日星期二 12:38
收件者: tpbpd/PLAND; Derek Ho Ming TAM/PLAND; Venus Hoi Ching CHOI/PLAND
主旨: Re: s16 Planning Application No. A/I-LI/36 (Departmental and Public Comments on 3.6.2025)
附件: 26 Tai Wan_Floor Plan of ASCP_Annex 1_9.6.2025.pdf; 2025.06.09 覆規劃署信_signed.pdf
類別: Internet Email

Dear Sir/Madam,

As the attachments of the previous submission on 11:20 is not clear enough, we now submit the updated further information as attached.

Regards,

For Rev. Leung Mei Chun

Sent from Gmail Mobile

**The Joshua Church, Hong Kong Limited
No.6, 1/F, Yung Shue Wan Back Street
Yung Shue Wan,
Lamma Island, Hong Kong**

9th of June, 2025

**Proposed Social Welfare Facility (After School Care Program (ASCP) Centre)
at G/F, No. 26 Tai Wan San Tsuen, Lamma Island**

Dear Sir/Madam,

I refer to your Departmental Comments (Application Submission on 28.4.2025) and public comments on the application. Please find our supplementary information below.

About Comments from Social Welfare Department

Upon the approval of our ASCP Centre, we will submit application to the Education Bureau for exemption from registration as a school, and will submit to the Social Welfare Department for the Fee-waiving Subsidy Scheme. We will run our ASCP Centre in compliance with the related Education Ordinance, Cap. 279.

About Comments from Department of Environment Protection (EPD)

We undertake to dispose sewage by STA system continuously until the proposed sewerage is implemented and convey the sewage produced to the public sewers once available.

About Comments from Drainage Services Department (DSD)

We will observe all the advisory comments of the Drainage Services Department. Since our Centre is a small-scale development, it will not cause any problem to the existing sewage system nor to the stormwater drainage facilities.

About Comments from Fire Services Department (FSD)

We will install all fire service safety facilities as required to the satisfaction of the Fire Services Department. We will also observe all the advisory comments of the Fire Services Department.

About Comments from Antiquities and Monument Office, Development Bureau (AMO, DEVB)

We will observe the advisory comments of the AMO, Development Bureau.

About the Issue of Noise

Our Centre is opened from 3:30 pm to 7 pm each day from Monday to Friday only (except public holidays). All activities of our ASCP Centre will be conducted indoor inside our Centre for three and a half hours only each day. No activities will be conducted outdoor. No activities will be conducted on Saturday and public holidays. Hence, our Centre will not cause any noise problem to the residents nearby our Centre.

About the Issue of Traffic Accident

Motor vehicles are prohibited on Lamma Island except fire trucks, ambulances and Village Vehicles (VV). The road traffic on Lamma Island is not busy at all. Traffic accident on Lamma Island was quite rare in past decades. Since our Centre is opened only from 3:30 pm to 7 pm each day from Monday to Friday (except public holidays). At 7 pm, when students leave our Centre, almost all VV traffic have already come to a halt. Hence, traffic accident should not be an issue of concern.

Use of Common Room and Classrooms

In addition to one pantry room and one wash room, our Centre mainly consists of one common room and two classrooms. In the common room, we will conduct recreational activities, personal skills development program and group activities for children. Stories books will be provided for children who can read stories book here. The two classrooms are for children to do their homework.

An updated floor plan at Annex 1 and an amended daily activities time-table at Annex 2 of our ASCP Centre are attached for your reference.

Should you require any further information, please contact [REDACTED] on [REDACTED]. Thank you!

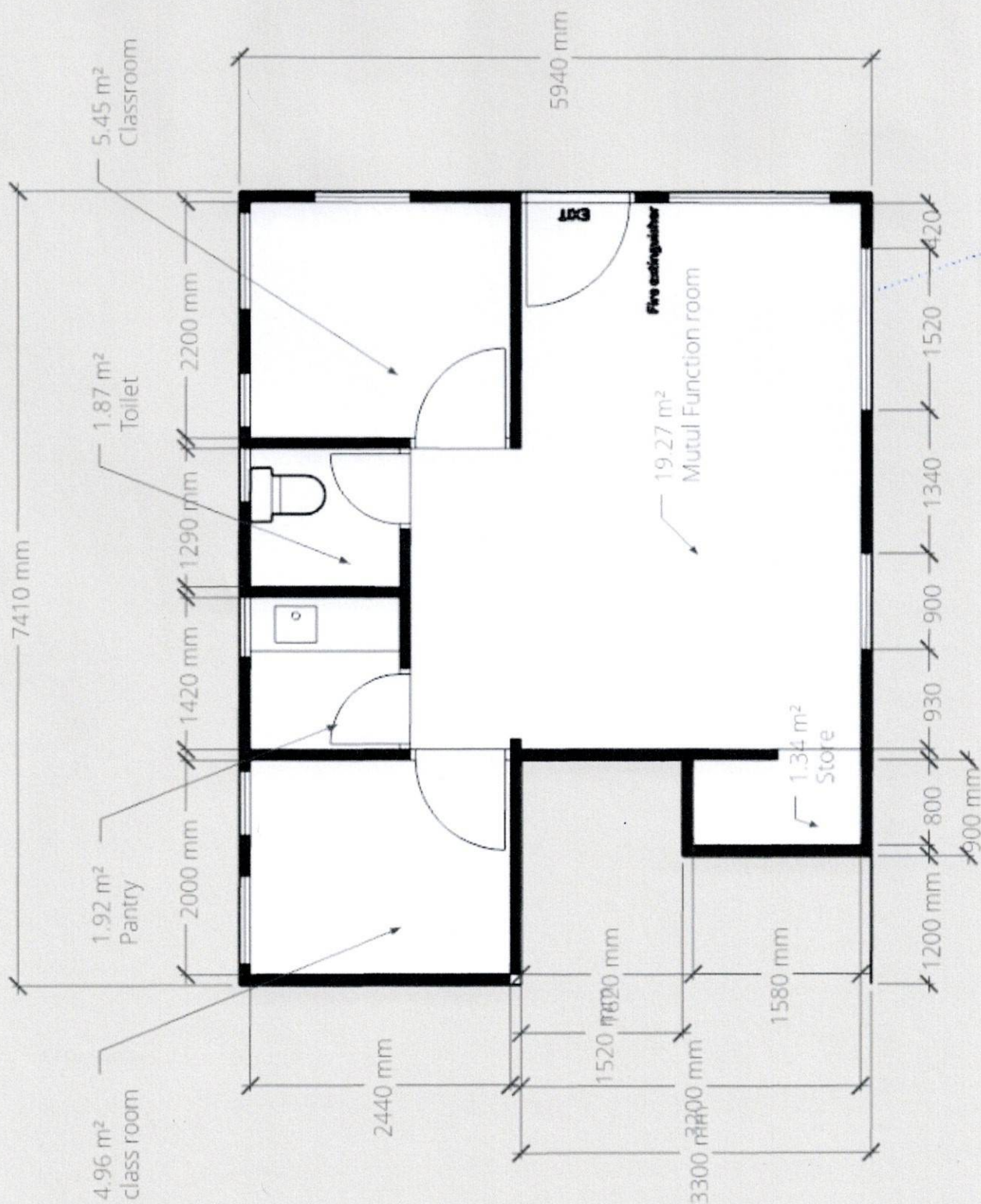
Regards,



LEUNG Mei-chun (Rev)

President of the Joshua Church, Hong Kong

Annex 1



N

Floor Plan the ASCP
(Lot DD3LM 2088)

Scale 1:500

The total area are no included of the wall

After School Care Program (ASCP) Centre
Daily Activities Time-table

Time / Weekday	Monday	Tuesday	Wednesday	Thursday	Friday
15:30 – 15:45	Children report to ASCP Centre / personal hygiene				
15:45 – 16:45	Home Work / Homework guidance (Homework tutoring, individual counseling and consultation, specialty foundation improvement services; cultivate and build students' learning interests and abilities)				
16:45 – 17:00	Snack / Tea time				
17:00 – 18:00	Team work training (Skills include: problem-solving, team co-operation, team games, communication, presentation, etc.)				
18:00 – 18:45	Self-care ability training (Activities include reading, writing, listening, playing chess, etc.)				
18:45 – 19:00	Personal hygiene and ready to leave				
19:00	Student go home / Parents take student home				